



## ACCESS STATEMENT

This information is intended as a guide, and any inaccuracies or omissions are not intentional. Please do not hesitate to contact us with any questions by telephoning 01333 451300 or email info @kingsbarnsdistillery.com.

### Welcome

Kingsbarns Distillery and Visitor Centre produces single malt Scotch whisky and is located in a converted farm steading at East Newhall Farm on the A917 coastal road between the villages of Crail and Kingsbarns in the East Neuk of Fife, Scotland. It is approximately 6 miles from St Andrews and 50 miles from Edinburgh.

The building is surrounded by fields and the landscape is flat.

The Visit Scotland 4 Star Attraction offers:

- level access
- lifts to first floor
- accessible toilets on both floors
- baby changing facilities
- level flooring throughout
- wide door openings
- gluten free and vegetarian options in cafe
- close proximity to popular tourist areas of St Andrews and the East Neuk of Fife



## Getting Here

Situated on the A917 coastal road between Kingsbarns and Crail (approximately 2 miles from Kingsbarns, 2 miles from Crail).

Bus service no.95 (St Andrews to Leven) stops at the road-end entrance on the A917 (Cambo Lodge bus stop). The bus from either direction runs once per hour. The journey time from St Andrews is approximately 20 minutes.

The building is approximately 500 metres/0.3 miles from the main road, along a compacted gravel road, at times an uneven surface.

For cars, there are passing places along the access road.

Train – the nearest train station is Leuchars, on the main London to Aberdeen line. Leuchars is approximately 10 minutes from St Andrews (by either taxi or bus).



bus stop from main road (A917) to distillery driveway



entrance to driveway on A917



driveway to distillery from A917



## Car Parking

- There are ample free parking spaces in our own car park, for cars or coaches.
- The car park is even and laid with gravel. There are no steps or kerbs.
- Blue Badge parking bays are the nearest to the building entrance, which is approximately 50 meters along an even tarmac walkway.



a section of the car park



disabled parking with distillery entrance beyond



walkway to entrance, reception and outdoor space

## Outdoor Space

- The cafe has a patio area to the front of the building (next to the main entrance door) with wooden bench-table seating for approximately 35 covers.
- There is a smoking area with bench seating outside the building, next to the car park. (note smoking is restricted in all other areas of the distillery, both inside and outside, for health & safety reasons).

## Arrival

- The building is entered via large manual outward-opening double doors at the end of the pathway from the car park.
- Opening width 115cm for one door, 230cm when both doors are open. Staff are on hand to assist with opening doors.
- There are no steps into the building, but there is a small threshold lip at the base of the doorway.



entrance to building and reception area



## Main Entrance, Reception and Ticketing Area

- The large reception area is situated on the ground floor, inside the entrance door.
- Flat slate flooring throughout the ground floor areas.
- Seats are available in the reception area, with ample space for buggies, wheelchairs etc.
- The ticket desk in the reception area includes a low height counter with space underneath.
- We have a complimentary ticket policy for carers.
- Lighting is low-light spotlights, hanging from the beams.
- No music in any part of the building.



entrance and reception area



## Attractions

- The ground floor is laid with grey slate flooring throughout and is flat, except the Doocot which has a step at the entrance and a narrow stone floor inside.

## Cafe:

- Open-plan from reception area or shop area with a wide entrance, leads to a self-service cafe with removal chairs and seating. Staff can assist if possible.
- Tables are brown in colour and 66cm from ground level to tabletop. Chairs have no arms. Crockery is white. Grey slate tiled flooring throughout.
- The cafe serves a selection of soup, sandwiches, cakes, hot and cold drinks. Vegetarian and gluten-free options available. A self-service counter is at the far end of the cafe, however staff can assist with table service on request.
- The WC is accessed through the shop (no doorways between cafe and WC)



cafe from reception area



cafe

## Shop:

- Open-plan from reception area or cafe area with a wide entrance.
- Level access, grey slate tiled flooring.
- Display units are on the perimeter of the shop area, with a large floor space surrounding the display
- Till counter has a two height counter top.
- Staff can assist when required.



entrance to shop (and WC) from reception and cafe area

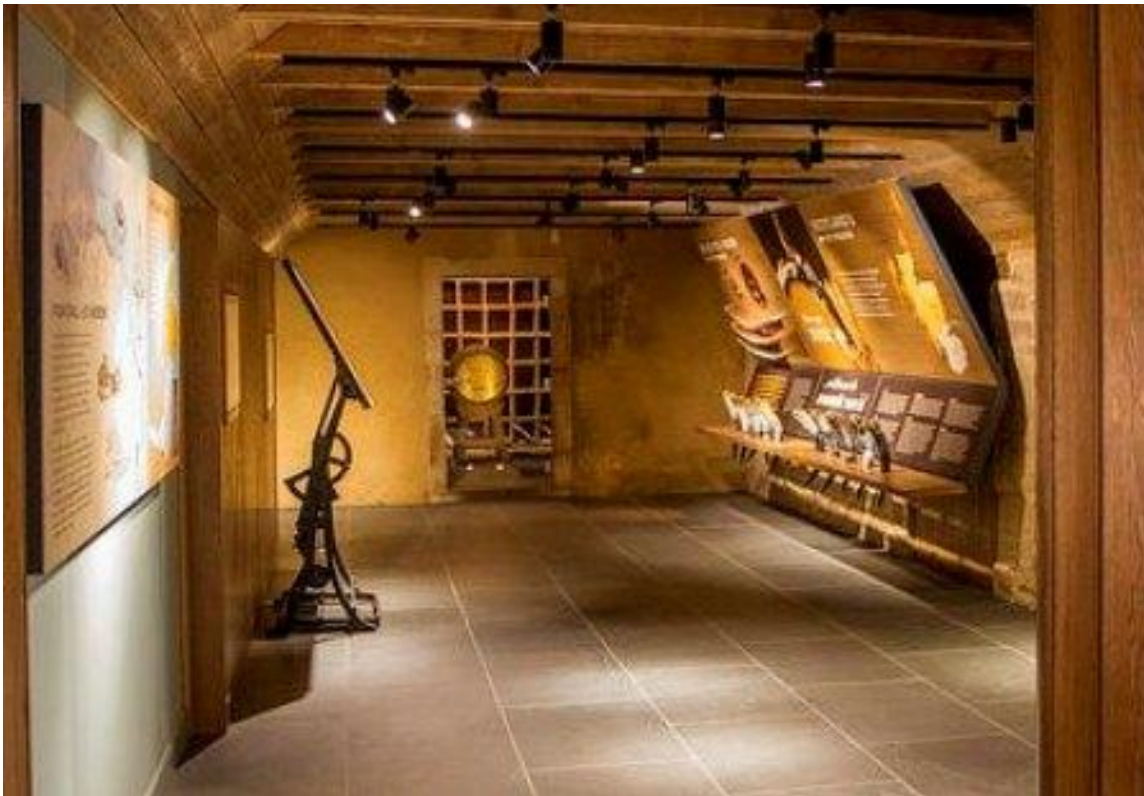


shop display



## Distillery Tour – Exhibition Area

- A door (106cm clearance) leads to the Exhibition Area that includes two wide display areas and a film-viewing area.
- The film-viewing area is dimly lit, with wooden bench seating and space for wheelchairs or buggies.
- The Doocot has stepped access and a narrow stone floor inside. The interior can be viewed from the door.



Exhibition Area with Doocot



door to doocot (one step at entrance)

## Distillery Tour - Gathering Area

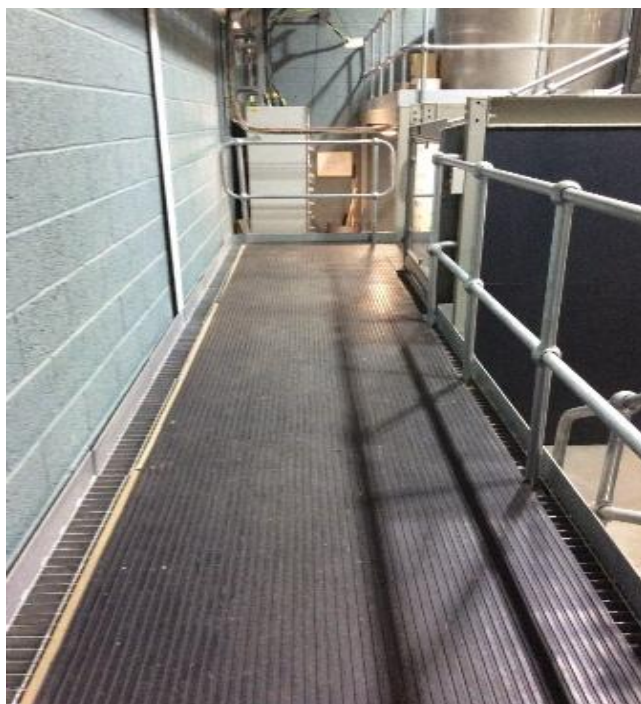
- Guides lead visitors into this presentation area, accessible via a wooden door (106cm clearance) from the exhibition area
- Wooden bench seating is provided, and there is space for wheelchairs and buggies.
- A tour guide is present at all times in this area.



Tour gathering area

## Distillery Tour: Whisky Production Area:

- A tour guide is present at all times in this area.
- A double wooden door (212cm clearance) leads from the tour gathering area to the Distillery area.
- A wooden door (74cm clearance) leads into the distillery production area.
- There is a walkway to the staircase to the production area. The walkway has rubber matting (width 110cm) and there are 9 steps to the upper level. A platform lift also provides access to the upper level. The staircase is metal with a fibreglass solid covering ( 97cm wide). The platform lift measures 124cm x 110cm.
- Flooring on the distillery public areas is rubber matting over metal grid flooring (120cm wide)
- There are 3-steps to the washback viewing area – the steps are covered in solid fibreglass and the height of top step is 33cm from floor level.
- The lower level at the opposite end of the production area, which houses the stills and spirit safe, is not suitable for wheelchair access. However, a clear view of the lower level is afforded from the upper level.
- Depending on distillery activity, this area can be noisy on weekdays.
- This area is quiet on Saturday and Sunday.



walkway inside production area to steps or platform lift to upper mezzanine level





photo above: platform lift



steps to upper level (situated to the left of the platform lift)



photo above: walkway on upper level (rubber matting)



photo above: steps to washback, for viewing

## Tasting Rooms

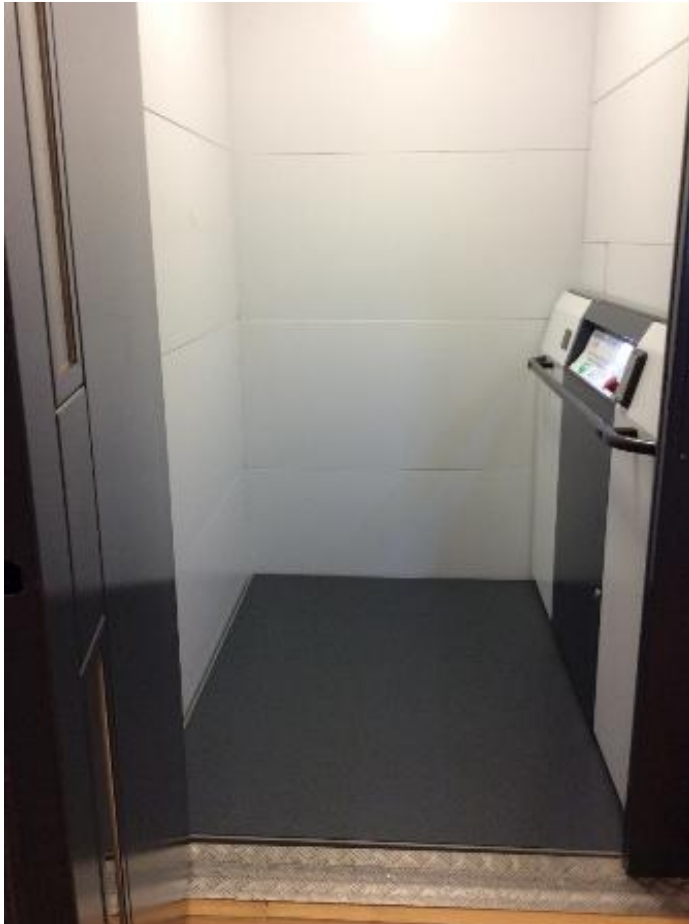
- Two tasting rooms are on the first floor of the building, accessed via a wooden staircase with a handrail, or a platform lift.
- Both tasting rooms area accessed via large wooden doors (84cm opening). There is space for wheelchairs in both rooms.
- wi-fi not available in either room (no connection)



Tasting Room

## Platform Lift to First Floor Tasting Rooms

- The platform lift measures 145cm x 105cm.
- It has audio announcements and a call button.



platform lift to tasting rooms



## Public Toilets

- Public toilets are available on both ground floor and first floor level.
- Ground floor: Level access from the shop. There is a separate disabled toilet, as well as a large cubicle in each of the ladies and gents toilets.
- Width of door to WC = 80cm
- room dimensions: 160cm x 210cm (140cm x 220cm on first floor)
- ground floor: 100cm clear space at right hand side of WC
- first floor: 86cm clear space at left hand side of WC
- Height of WC from floor to seat = 46cm
- Horizontal and vertical grab rails at both sides of sink and WC. Pull down rail at side of WC.
- Cord pull emergency call system.
- Lever mixer tap
- WC is lit by spotlights on ceiling.



Entrance to ground floor WC, through the shop



Ground Floor Disabled WC

## Additional Information

- Signage is pale blue background, with dark brown print, and variable sizes of font.
- Flooring:
  - Dark Grey slate tiling throughout ground floor.
  - Rubber Matting in distillery production area
  - Wooden flooring upstairs
- Step free access throughout ground floor and first floor
- Steps or platform lift in distillery production area
- There is no background music in any part of the building
- Wifi is available in ground floor levels. Not available in upstairs tasting rooms.
- The distillery production area is noiser on weekdays, but quieter on weekends.
- Lighting: overhead spotlights throughout
- No hearing loops available
- Seating (without arms) available in reception area, cafe, tasting rooms, film area, tour gathering area. Please request seating for other areas if required.
- Provision for evacuation: A tour guide is with visitors at all times and they are trained in evacuation procedures. There are visual and audible alarms throughout the building. The evacuation assembly point is at the far end of the car park – staff will guide visitors.
- Whilst we do not generally allow dogs the premises, assistance dogs are welcome. There are outdoor areas for exercise with water bowl provided outside.
- This access statement is available in large print on request.

## Local Information

Bus route – no.95 service from St Andrews to Leven  
(Stagecoach Bus - <https://www.stagecoachbus.com/plan-a-journey>)

Train Station – Leuchars (for St Andrews)  
<https://www.scotrail.co.uk/plan-your-journey/stations-and-facilities/leu>

Taxi – there are various taxi companies in St Andrews  
<http://www.visitstandrews.com/plan/getting-around/taxis/>

Nearest Hospital and GP Surgery  
[St Andrews Community Hospital and GP Surgeries](#)

Accommodation Providers  
There are many places to stay in St Andrews (<http://www.visitstandrews.com/stay/>)  
and the villages of the East Neuk of Fife

We are always looking for ways to improve the service we provide to our visitors, so please contact us if you have any comments or suggestions about this access statement or anything else you think can improve your visit.

For further information, special requests, or clarification on any points, please call us on 01333 451300 or email [info@kingsbarnsdistillery.com](mailto:info@kingsbarnsdistillery.com).  
Thank you.